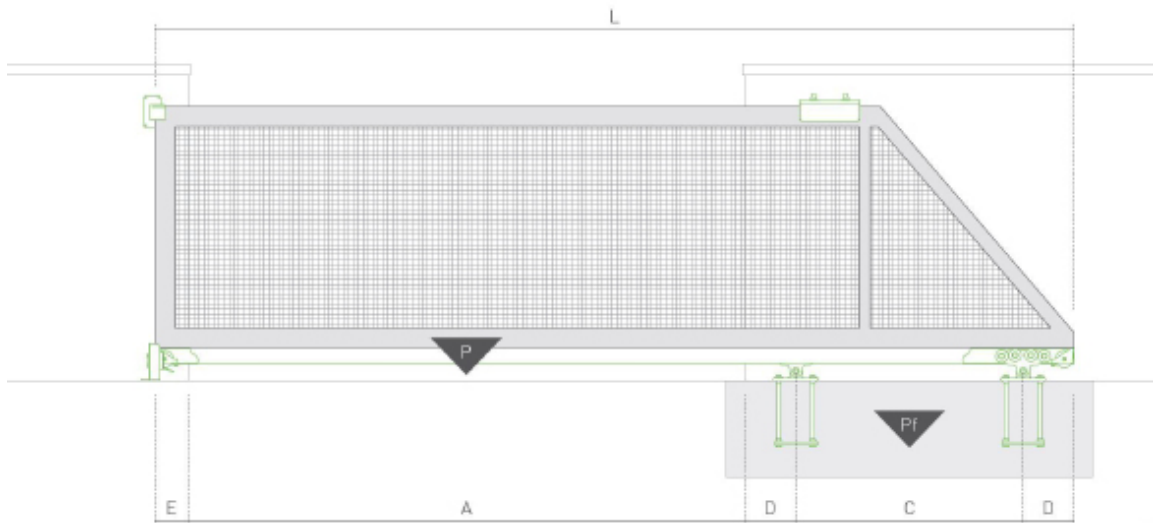


INSTRUCTIUNI MONTAJ

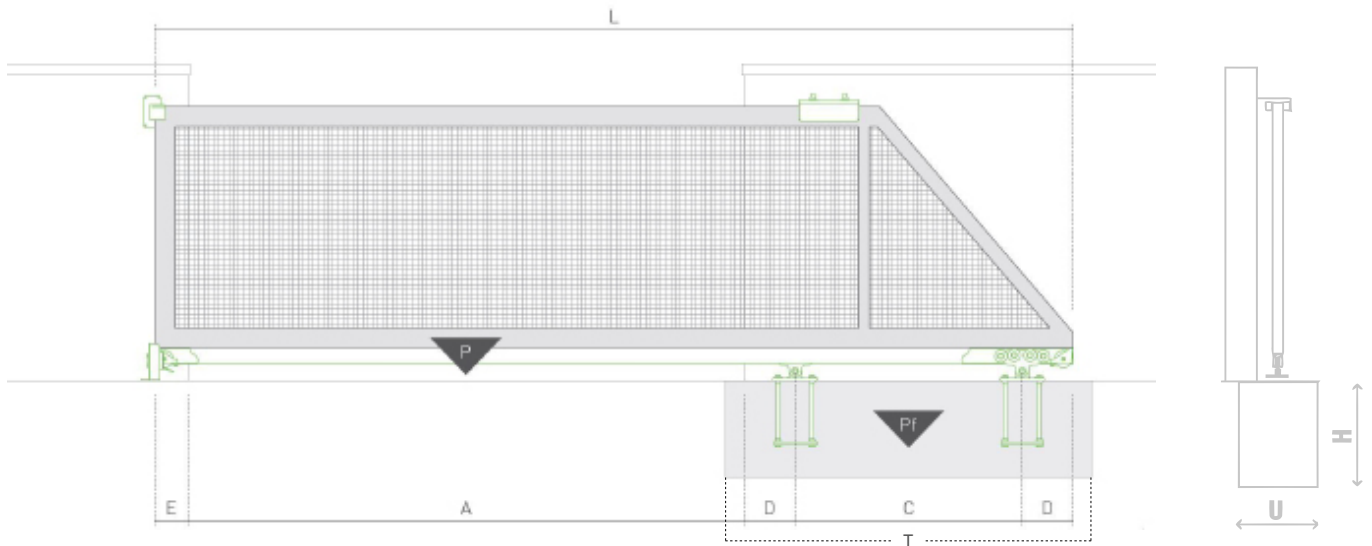
PORTI AUTOPORTANTE | CANTILEVER GATES



- A (m)** deschidere poartă | clear opening
- C (m)** distanța dintre centrele cărucioarelor ($C = 1/3A$) | distance between the support rollers centre ($C=1/3A$)
- D (m)** distanța minimă de la centrul rolei de sprijin până la capătul căii de rulare pentru carcasa rolei de sprijin | minimum distance from support roller centre to track end for support roller housing
- E (m)** spațiu minim pentru opritorul cu rulment | minimum space for support wheel positioning
- L (m)** lungimea totală a porții ($L = A + C + 2xD + E$) | overall gate length ($L=A+C+2xD+E$)
- P (kg)** greutatea porții | gate weight

INSTRUCTIUNI MONTAJ

PORTI AUTOPORTANTE | CANTILEVER GATES



KIT XS CU 5 ROLE & 8 ROLE | KIT XS WITH 5 ROLS & 8 ROLS

A (m)	C (m)	P (kg)	T x U x H min (m)	DATE CONSTANTE FIXED DATA
2	0.8	350	1.3 x 0.4 x 0.5	D (m) = 0.115 E (m) = 0.14
2.5	1	350	1.5 x 0.4 x 0.5	
3	1.2	350	1.7 x 0.4 x 0.5	
3.5	1.4	350	1.9 x 0.4 x 0.5	
4	1.6	350	2.1 x 0.4 x 0.5	
4.5	1.8	350	2.3 x 0.4 x 0.5	
5	2	350	2.5 x 0.4 x 0.5	

Aceasta este doar o sugestie de montaj. Nu ne facem răspunzători pentru montajul necorespunzător al kiturilor noastre de către personalul neautorizat.

This is just a mounting suggestion. We are not responsible for improper assembly of our kits by unauthorized personnel.